

# MONTHLY MEMBERSHIP PROGRESS REPORT

District 26 M5

Results as of: 5/31/2020

GMT:

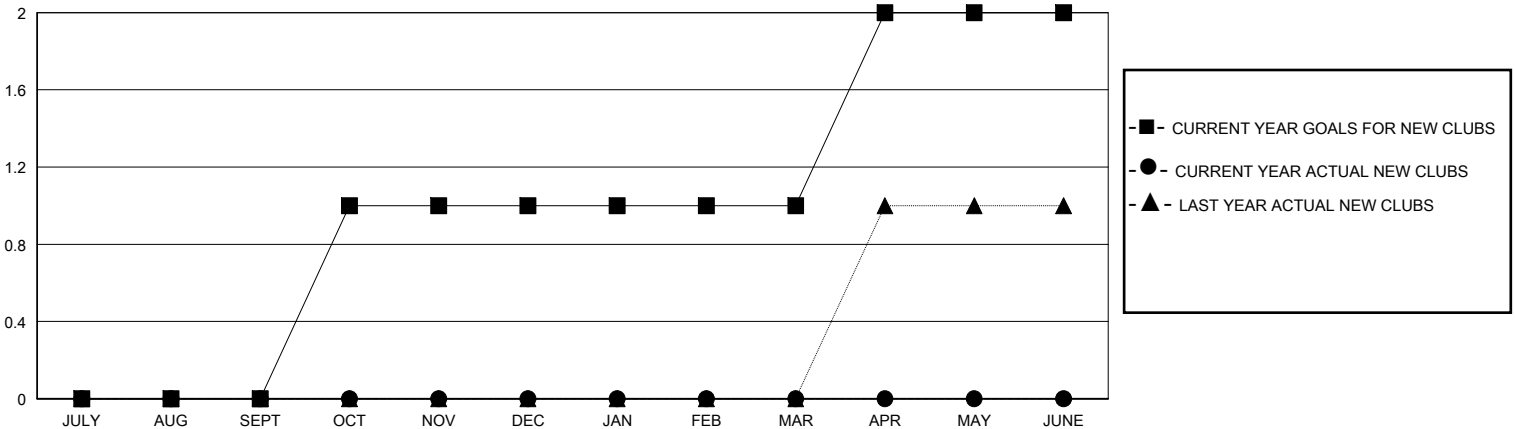
LOCATION MISSOURI

GMT CA

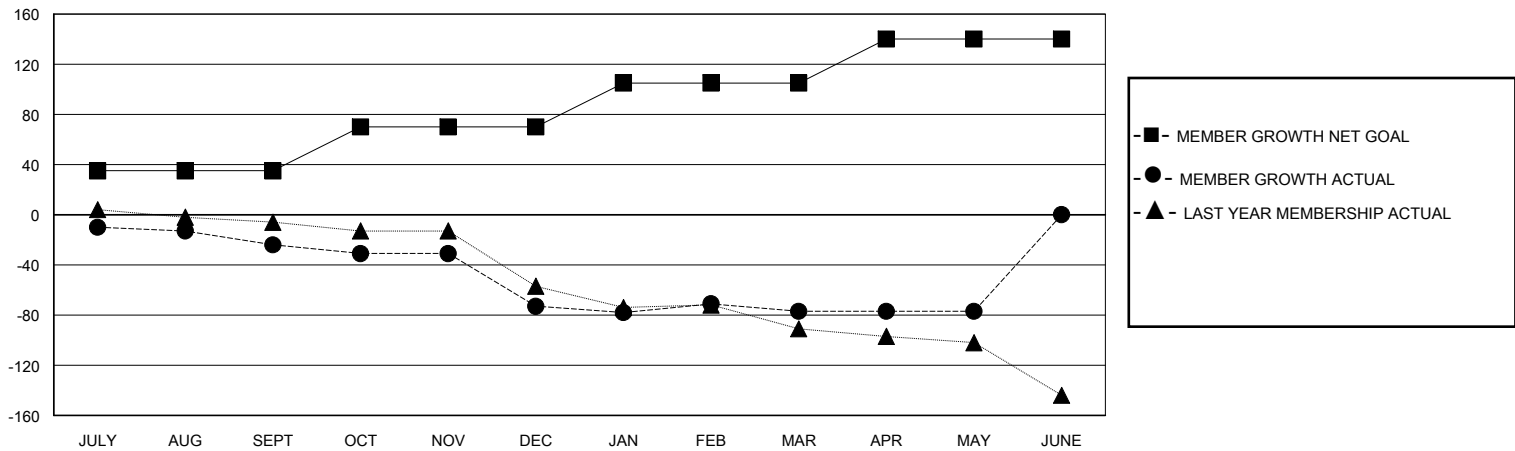
Clubs			
RESULTS FOR 2019-2020			
QUARTER	NEW CLUB GOAL	NEW CLUBS	DROPPED CLUBS
JULY/AUG/SEPT	0	0	0
OCT/NOV/DEC	1	0	3
JAN/FEB/MAR	0	0	0
APR/MAY/JUNE	1	0	0

Members			
RESULTS FOR 2019-2020			
QUARTER	MEMBER GROWTH NET GOAL	MEMBER GROWTH ACTUAL	DROPPED MEMBERS ACTUAL (including transfers)
JULY/AUG/SEPT	35	24	45
OCT/NOV/DEC	35	9	57
JAN/FEB/MAR	35	18	21
APR/MAY/JUNE	35	4	4

GOALS AND ACTUAL NEW CLUBS CUMULATIVE



GOALS AND ACTUAL MEMBERS CUMULATIVE



<b>DROPPED CLUBS: 3</b>	26 CLUBS OF 51 ADDED 1 OR MORE NEW MEMBERS	<b>GENDER DISTRIBUTION</b>	
		MALE 724 (66.42%)	FEMALE 366 (33.58%)
<b>DROPPED MEMBERS</b>		TOTAL FAMILY UNIT MEMBERS 229	
DECEASED 10	CLUB CANCELLED 30		
OTHER 87		FAMILY MEMBERS PAYING HALF DUES 118	
<b>TOTAL 127</b>		<a href="#">CLICK HERE FOR CUMULATIVE MEMBERSHIP DATA</a>	